

# RESALLIANCE

Consulting / Modelisation / Business Strategy

# CLIMATE CHANGE



---

# ADAPTATION

DESIGN, BUILD AND OPERATE YOUR RESILIENCE





(Douala, 2020)



(Burkina Faso, 2009)

# FUTURE PROJECT: STRENGTHENING OF CLIMATE CHANGE ADAPTATION IN URBAN MOBILITY PLANNING (WITH ADEME SUPPORT)

07/10/2022

## SUSTAINABLE MOBILITY AND CLIMATE WEEK 2022

# KEY INFORMATION

**Title:** "Strengthening the consideration of adaptation to climate change in international multilateral initiatives of urban planning through an approach combining mobility, transport and the built environment"

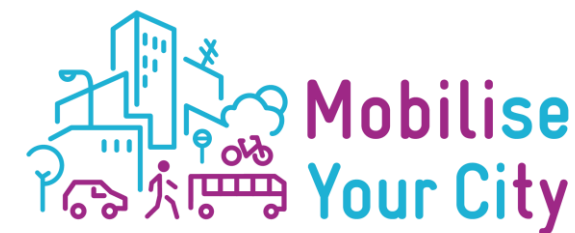
**Funding:** ADEME call for proposals for Strengthening the consideration of adaptation to climate change in international multilateral initiatives multilatérales



**Consortium :** RESALLIANCE + CODATU + MobiliseYourCity +GABC

**Dates:** Nov 2022 - Mar 2024

RESALLIANCE



Agir pour une mobilité soutenable dans les villes en développement



# PROJECT ORGANISATION



Global Partnership for Sustainable Urban Mobility, which empowers cities to improve urban mobility and take local action to tackle the climate crisis

## Beneficiaries

Strengthen the integration of climate change adaptation into **international multilateral initiatives**



Global Alliance for Buildings and Construction

Meta platform bringing together initiatives and actors committed to a common vision: A zero-emission, efficient and resilient building and construction sector

## Implementing partners



Agir pour une mobilité soutenable dans les villes en développement

association aiming to promote international exchanges between the different actors in the field of transport and urban mobility

**RESALLIANCE**

consultancy firm carrying out advisory missions and innovation projects in the field of adaptation to climate change

# STARTING POINT

For adaptation to be properly taken into account, it is necessary to propose and disseminate to international actors principles and tools that will enable adaptation to CC to be implemented in **a coherent manner in different sectors (transport, construction, etc.) and at different scales (buildings, cities, countries, etc.)**. However, these subjects have often been dealt with in isolation.



Agir pour une mobilité soutenable dans les villes en développement

## Urban mobility

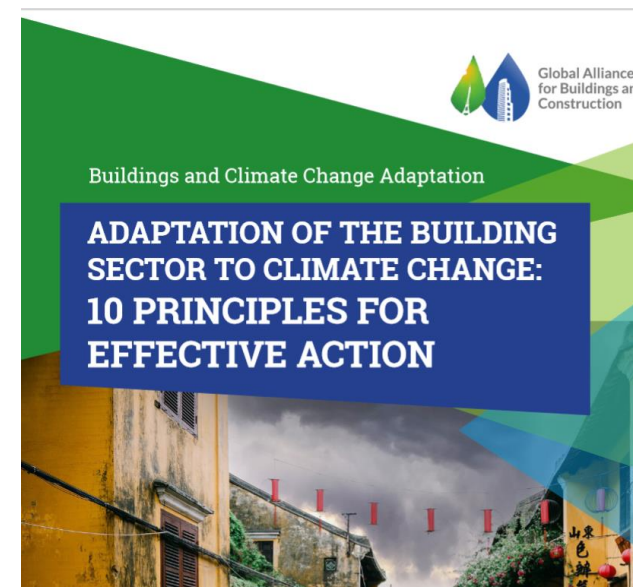
10 principles for the adaptation of urban mobility (2022)



Global Alliance  
for Buildings and  
Construction

## Built environment

10 principles of building adaptation (in 2021)



**1. Urgency:** act now

**2. Stakeholders:** foresee a systematic integration of adaptation measures along the whole value chain

**3. Process:** include adaptation along the whole life cycle of an asset

**4. Mitigation:** jointly implement adaptation and mitigation actions

**5. Data:** understand the data about climate-related risks and accept uncertainty

**6. Scale:** think beyond of real estate assets

**7. Nature:** include nature-based measures

**8. Users:** Promote an equitable adaptation of the building sector

**9. Finance:** allow adaptation of the building sector

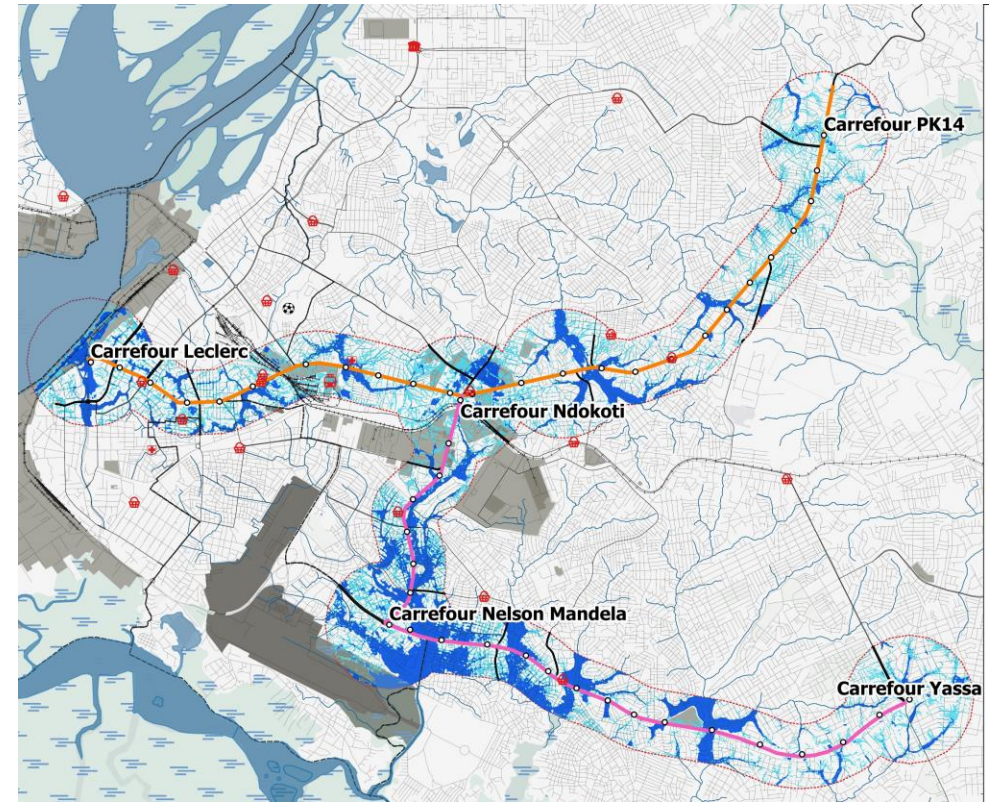
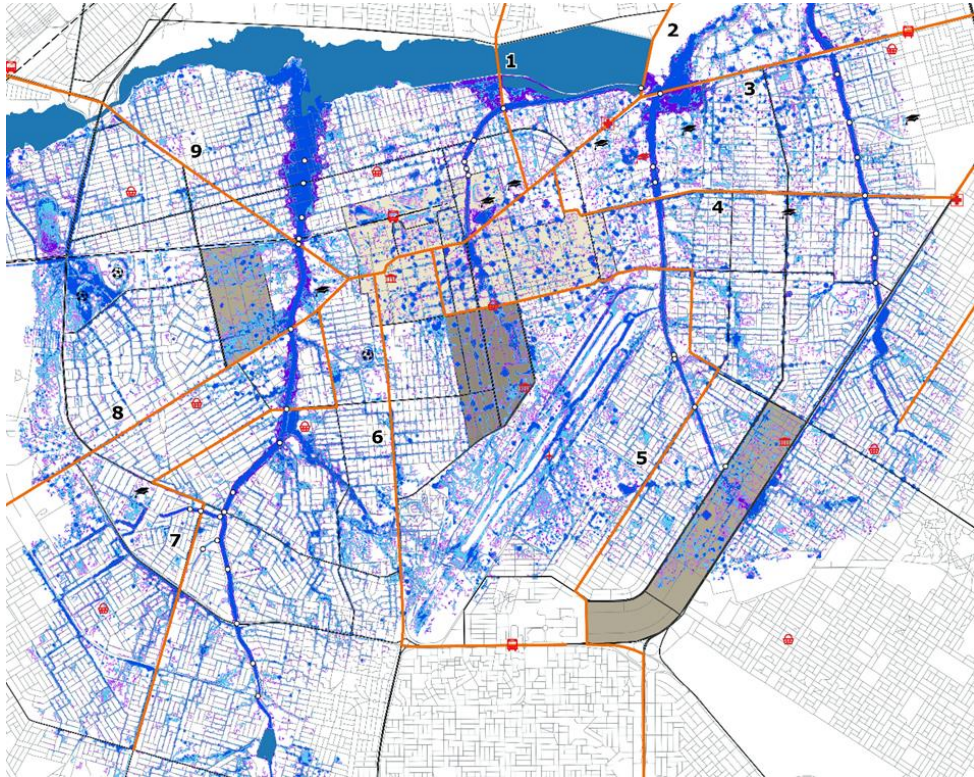
**10. Local:** adjust adaptation measures to the local context



# BRT OF OUAGADOUGOU AND DOULA

**Context:** Upstream studies for the design and financing of a transport system (BRT and bus)

- Proposals for resilience solutions (grey, green and institutional)
- Multi-criteria analysis (investment cost, maintenance cost, efficiency and co-benefits) to prioritise solutions
- TOD (Douala)

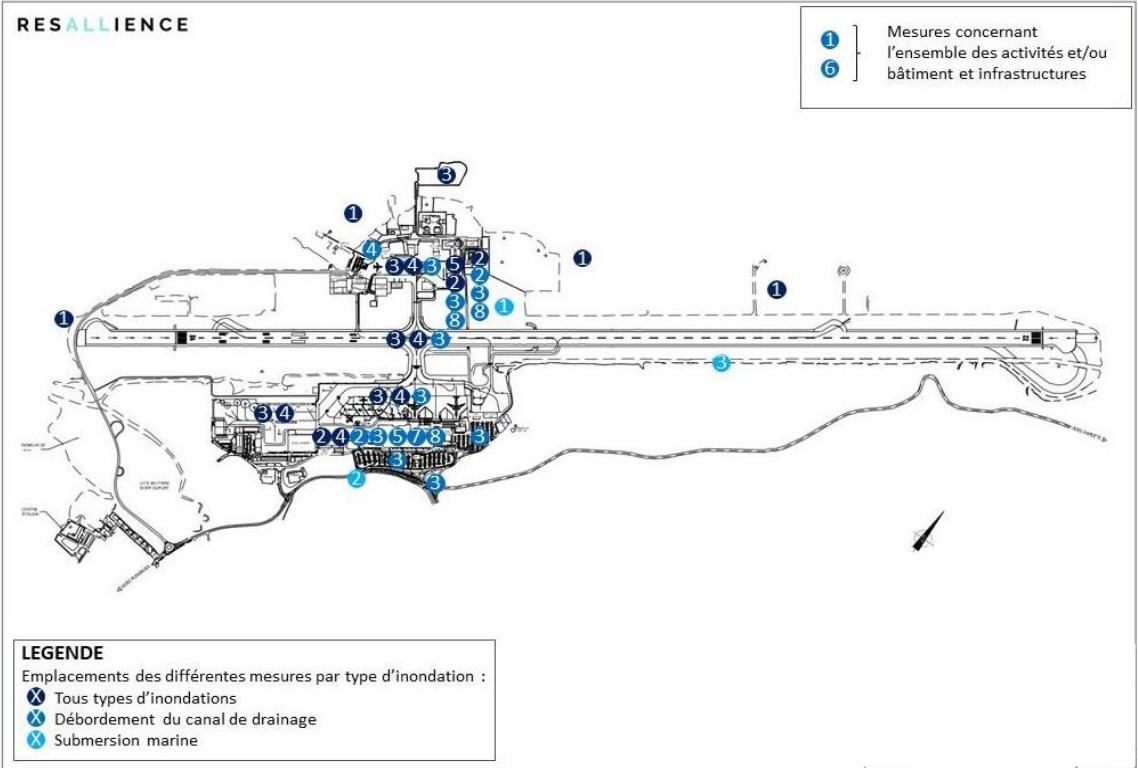
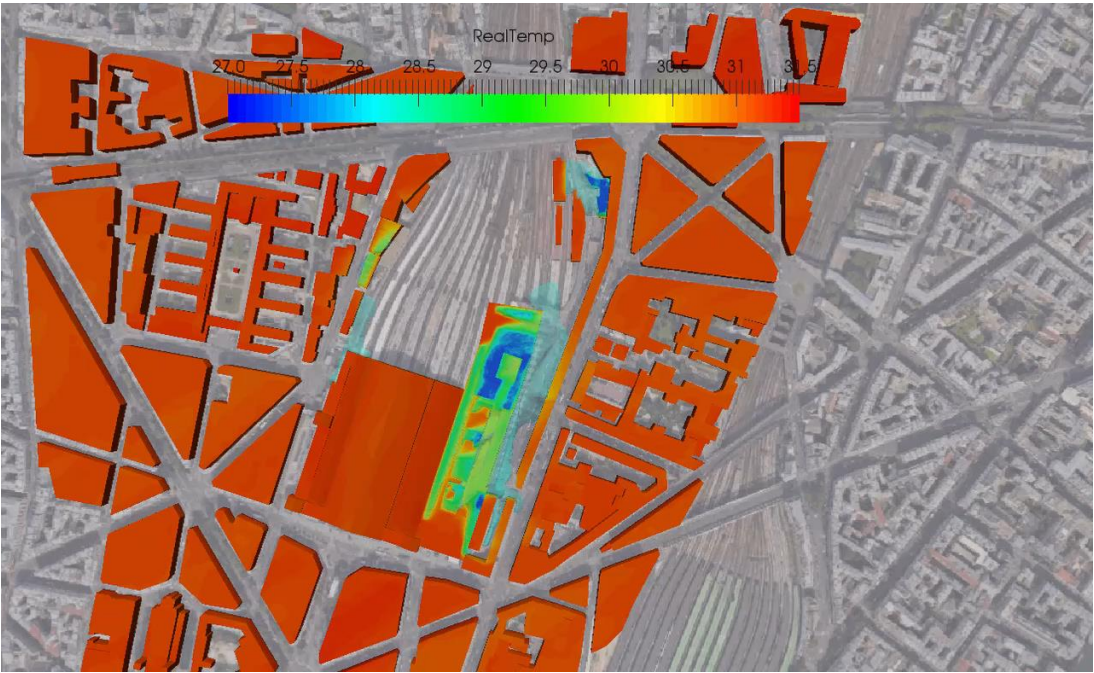




# STATION OR AIRPORT PROJECT

**Context:** Design or rehabilitation studies of railway stations/airports

- Solution proposals (grey, green and institutional)
- Multi-criteria analysis (investment cost, maintenance cost, efficiency and co-benefits) to prioritise solutions





# PROPOSAL

- A cross-sectional approach between the built environment and mobility => urban planning, particularly in the Southern countries
- 10 key principles for adapting urban planning to CC from the perspective of the link between mobility and the built environment
- Animation actions (working group, elaboration of the 10 principles and follow-up indicators)
- Communication actions (including COP27 in Sharm-El-Sheikh, COP28, etc.)
- Training actions (3 webinars, 1 Conference)
- Integration of CC adaptation in the definition of Sustainable Urban Mobility Plans (SUMP) and National Urban Mobility Policies and Investment Programmes (NUMP)



(Douala, 2020)



(Burkina Faso, 2009)

# THANK YOU

[philipe.sohouenou@resallience.com](mailto:philipe.sohouenou@resallience.com)  
[nicolas.ziv@resallience.com](mailto:nicolas.ziv@resallience.com)