



# MobiliseYourCity



## OUR OBJECTIVES

Together with 100 cities and 20 countries we aim to:

- Accelerate the transition to sustainable urban mobility
- Foster more comprehensive, integrated and participatory urban mobility planning through SUMPs and NUMPs
- Facilitate access to sustainable financing for large-scale mobility projects
- Close the investment gap for sustainable mobility



# A Strong Consortium of 17 organisations, established at COP21



## Part of:

Marrakech  
Partnership



## Donors:



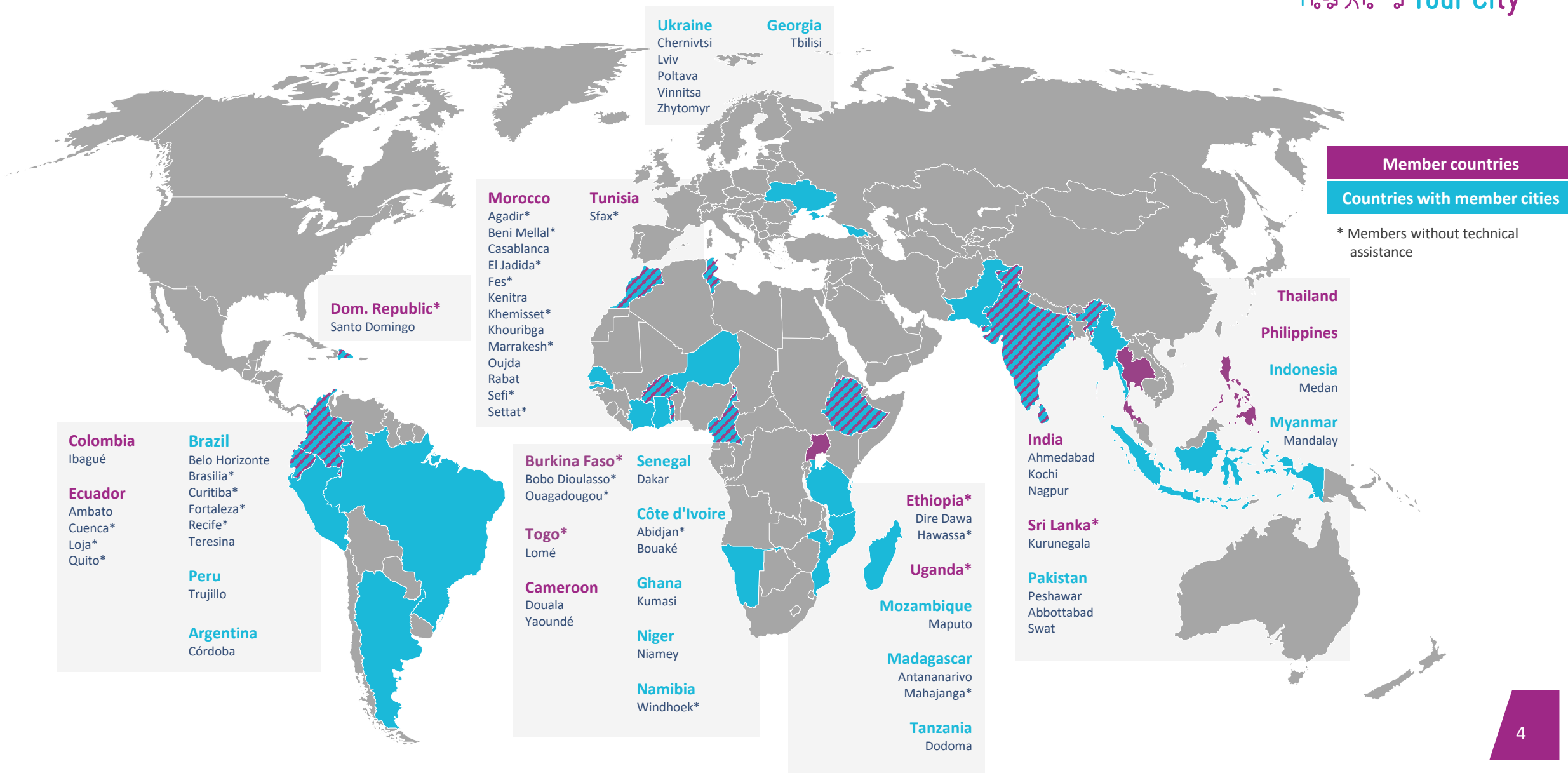
## Implementing partners:



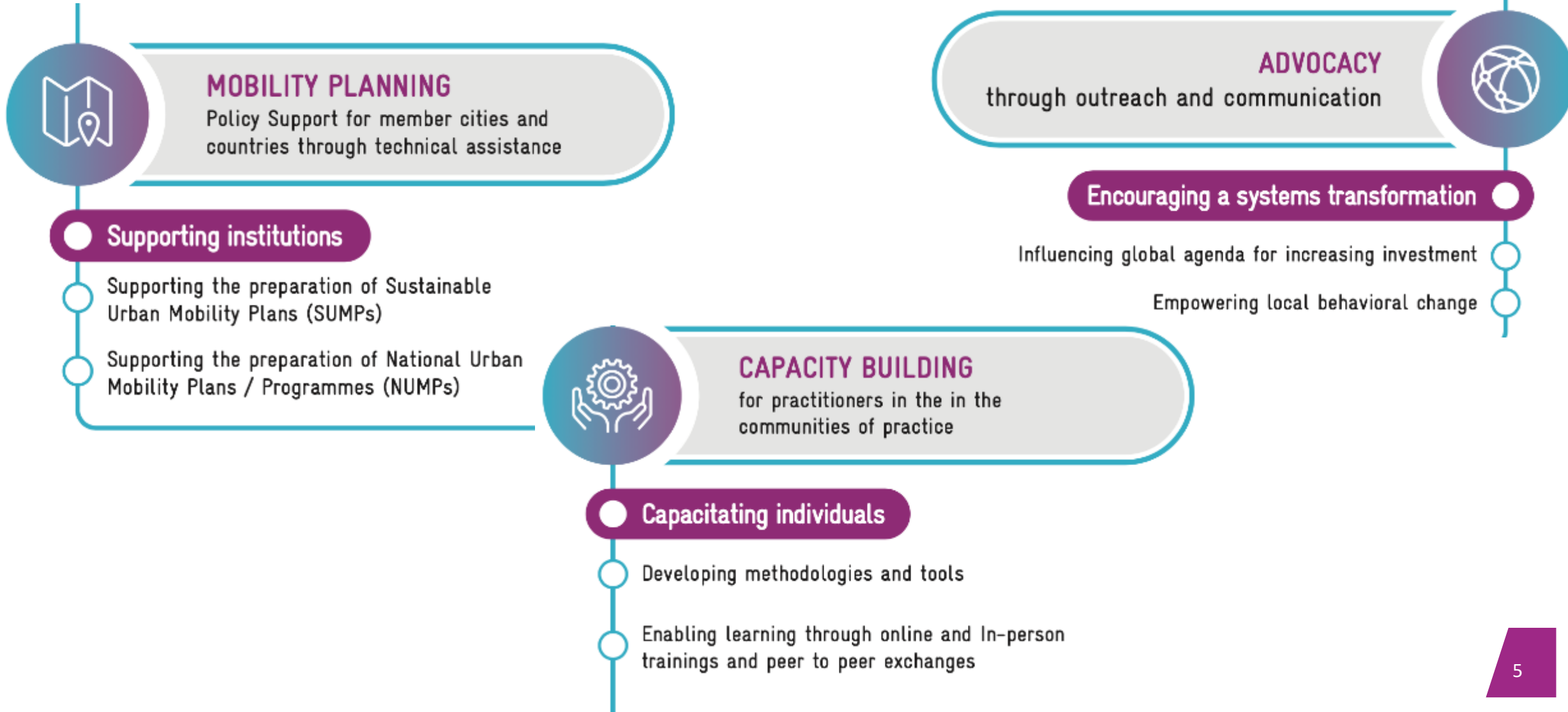
## Knowledge and Network partners:



# Member Countries and Cities across the world

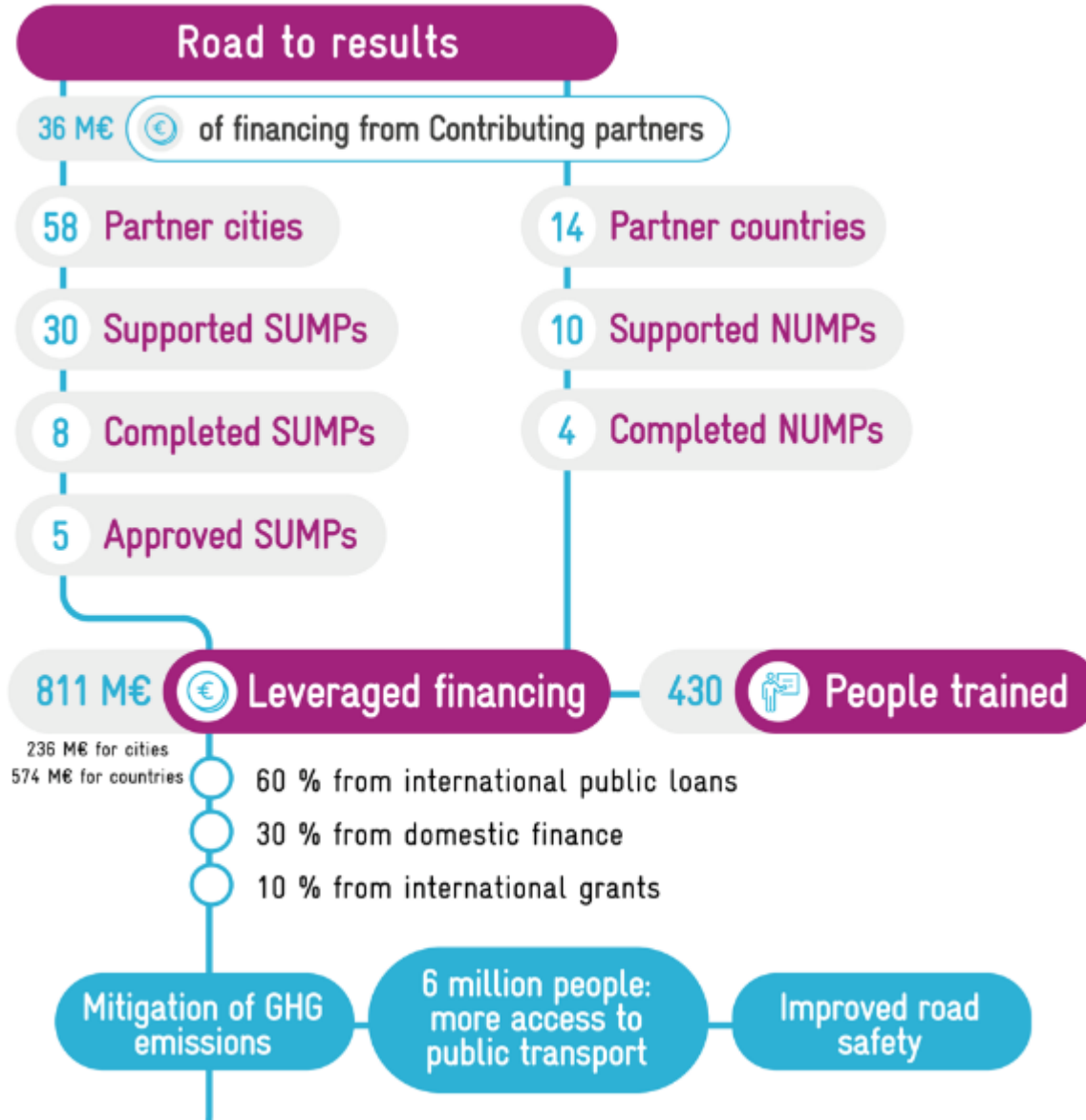


# MobiliseYourCity service areas to accelerate the transition to sustainable urban mobility





# Mobility planning: supporting SUMP and NUMP



**Projected 33% reduction in traffic accident casualties**  
in the first SUMP with data

## SUMP Definition

**“A Sustainable Urban Mobility Plan is a strategic plan designed to satisfy the mobility needs of people and businesses in cities and their surroundings for a better quality of life. It builds on existing planning practices and takes due consideration of integration, participation, and evaluation principles.”**

Source: Recommendations for Sustainable Urban Mobility Plans (EU 2013)



# The Difference: Traditional Master Plans and SUMP



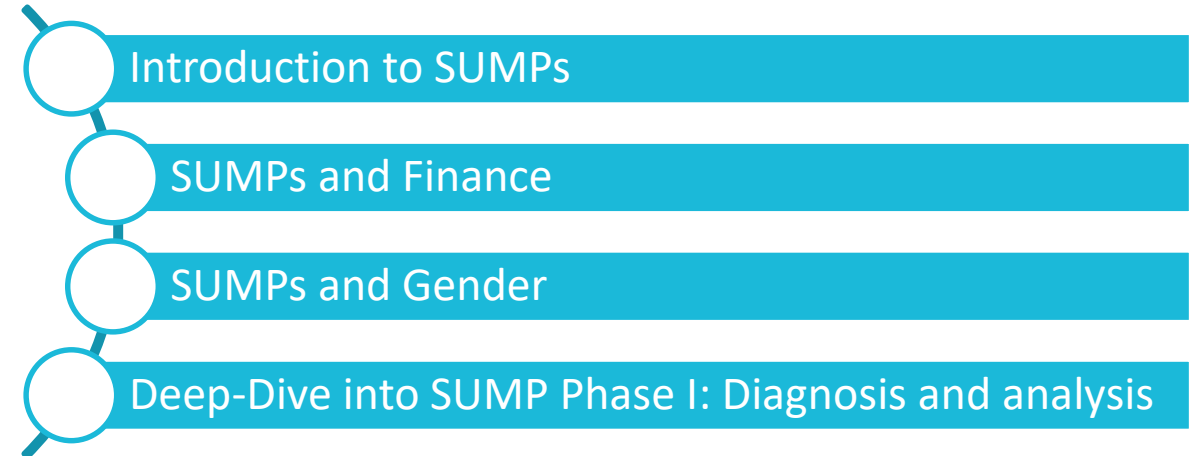
Traditional Transport Plans		Sustainable Urban Mobility Plan
Often short-term perspective without a strategic vision	<b>Strategy/vision</b>	Including a <b>long-term / strategic vision</b> with a time horizon of 20-30 years
Usually focus on particular city	<b>Geographic scope</b>	<b>Functional city</b> ; cooperation of city with neighbouring authorities essential
Often prepared only by one responsible line ministry	<b>Public sector ownership</b>	Based on <b>inter-ministerial coordination</b> and collaboration
Usually not mandatory to cooperate between authority levels	<b>Institutional cooperation</b>	<b>Integration between authority levels</b> (e.g. district, municipality, agglomeration, region)
Limited input from operators and other local partners, not mandatory	<b>Level of public involvement</b>	<b>High, citizen and stakeholder involvement</b> an essential characteristic
Not a mandatory consideration	<b>Sustainability</b>	<b>Balancing</b> social equity, environmental quality and economic development
Low, transport and infrastructure Focus (“domain of transport engineers”)	<b>Sector integration</b>	<b>Integration</b> of practices and policies <b>between sectors</b> (environment, land-use, social etc.)
Often missing or focusing on broad objectives	<b>Monitoring &amp; Evaluation</b>	Focus on the achievement of <b>measurable targets and outcomes</b> (=impacts)
Historic emphasis on road schemes and infrastructure development	<b>Thematic focus</b>	Decisive <b>shift in favour of measures to encourage public transport, walking and cycling</b> and beyond (quality of land-use etc.)
Not considered	<b>Cost internalisation</b>	Review of <b>transport costs and benefits also across policy sectors</b>



# MobiliseYourCity's Mastering Mobility Series: Sustainable Urban Mobility Plans (SUMPs)

**MobiliseYourCity's Mastering Mobility month will equip you with the necessary resources and knowledge to start developing a Sustainable Urban Mobility Plan (SUMP) in your city.**

You will participate in four dedicated trainings on SUMPs and related topics:



You will have access to practical experience and state-of-the art methodologies

Methodologies  
and tools on  
SUMPs

Case studies

Expert inputs

Group activities

## Introduction to SUMP: Objectives of the training

**At the end of this session, you will be able to:**

- Define the difference between sustainable transport and traditional mobility and the implications for planning
- Define the SUMP concept and how it supports sustainable mobility planning
- Identify the resources required to do a SUMP
- Describe the main steps in preparing a SUMP
- Reflect on the next implementation steps after adopting a SUMP

**Thank you**

**[mobiliseyourcity.net](https://mobiliseyourcity.net)**

**[contact@mobiliseyourcity.net](mailto:contact@mobiliseyourcity.net)**

 **[@MobiliseCity](https://twitter.com/MobiliseCity)**

 **[@MobiliseYourCity](https://facebook.com/MobiliseYourCity)**